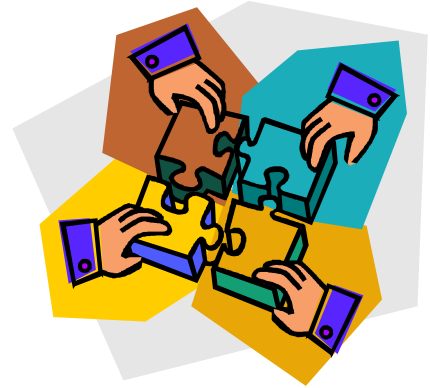


Comings & Goings

Welcome to:

- Dr Suzanne Ingram, Honiton Surgery
- Dr Bodo Brockman, St Budeaux Health Centre
- Dr Alison Stanning, Caen Medical Centre
- Dr David Lee, Holwsorthy Medical Centre
- Dr Helen Rochester, Ernesettle Green Surgery
- Dr Dawn Tierney, Waterloo & St Leven Surgery
- Dr Elizabeth Chapman, West Hoe Surgery
- Dr Jonathan Carty, Lifton Surgery
- Dr Suzanne Smit, Holsworthy Medical Centre



Goodbye to:

- Dr Peter Brummitt, The Wooda Surgery
- Dr Andrew Baverstock, Holsworthy Medical Centre
- Dr John Morris, Ivybridge Health Centre

Looking for work...

Practice Nurse Post Required

Exeter, Torbay and Plymouth Area

I am a qualified Health Visitor (BSc Hons Health Studies & Community Care), Cardio-thoracic nurse specialist (ENB254) and counsellor (BACP Accr) and would like to train as a Nurse Practitioner. I am therefore seeking a part time post as a Practice Nurse where I will be able to offer my expertise as well as extend my role and gain expertise in advanced clinical skills.

Please contact Lynne Holmes

Tel: 01364 652035 or e:mail lynne.holmes@nhs.net

Nurse Locum Available South Devon

13 years Practice Nurse and Nurse Practitioner experience in Devon.

I am looking for short or longer term locum work. Tel: 01803 214864

CV/terms on email: katetj@tiscali.co.uk

Dr Louise Knight MRCGP

Flexible Careers Scheme GP Seeks 2 - 5 Sessions in Exeter/East Devon Practice

I completed my GP registrar year and continued at the same practice in Ivybridge for a year on the flexible careers scheme. However, my family have now moved to East Devon and I am looking for a position closer to our new home. I have 18 months remaining on the scheme, although ideally would like to find somewhere that I could work longer term.

Please contact me at lojones@lycos.co.uk or on 01404 815570

VACANCIES

Raleigh Surgery
33 Pines Road
Exmouth
Devon
EX8 5NR
Tel: 01395 222499
Email: Tracy.Turner@gp-L83627.nhs.uk

Salaried GP

Required for a 2-partner practice in Exmouth
(one part-time and one full-time)

We are looking for someone to join our small and friendly team
for 6/7 sessions per week

Approximately 4,200 patients

We currently use the Microtest system and are a paper-light Surgery

Initially salaried post with option to join partnership at a later date

Start date January 2007

Closing date for applications: **31st August 2006.**

Written applications with CV to Mrs Tracy Turner, Practice Manager.

Informal enquiries to Dr David Spiers or Dr Jane Cartledge

The Blackdown Practice
Station Road
Hemyock
Cullompton
EX15 3SF
Tel: 01823 680555
Email: wendy.eggleton@gp-L83044.nhs.uk

Locum GP Required - cover for maternity leave
Start date 2nd October 2006 for six months
4 sessions per week, preferably all day Monday and
all day Thursday, but negotiable
EMIS clinical system
Friendly, rural practice with large support team of
clinical and non clinical staff
Further information from Wendy Eggleton, Practice Manager.

**Year 5 Community Block Lead for
Supporting Academic Programme
One year fixed term initially**

The Plymouth Locality of the Peninsula Medical School is seeking to appoint a GP, with an interest and experience of Clinical Teaching, to help arrange, coordinate and provide the delivery of the Supporting Academic Programme within the Year 5 Community block, which includes delivery of group teaching sessions on a variety of community based topics. The individual must be available for one fixed session a week on Wednesday mornings. Teaching will be delivered from two sites, the John Bull Building, Tamar Science Park, Plymouth and Torbay Hospital. This post is an exciting opportunity to contribute substantively to the clinical education of medical students.

Please contact Jodene Prior for further details of the role and the person specification.

(Jodene.prior@pms.ac.uk Tel: 01752 437354)

Closing Date 4th August 2006

Interviews will be held in the afternoon on Wednesday 16th August 2006

The good, the bad and the ugly...

A round up of recent guidance and documents newly published on the Devon LMC web site – www.devonlmc.org - If you experience any problems finding or downloading a document, please contact John Baker at the LMC office or email john@devonlmc.org

Safer management of controlled drugs (CD): changes to record-keeping requirements (June 2006 - Interim Guidance)

The purpose of this guidance is to inform and support relevant healthcare professionals and organisations in implementing changes to the record keeping requirements for controlled drugs required by the recent (November 2005) and forthcoming (July 2006) changes to the Misuse of Drugs Regulations 2001.

– see <http://tinyurl.com/r9v42>



Safer management of controlled drugs: private CD prescriptions and other changes to the prescribing and dispensing of controlled drugs

This document sets out the action required to implement a series of changes to the way controlled drugs (CDs) for human use are prescribed and dispensed and the monitoring of this activity. The arrangements came into force on 1 April 2006 and have now been given statutory backing in the Misuse of Drugs regulations which will come into effect on 7 July 2006. – see <http://tinyurl.com/q6fh9>



PCC (Primary Care Contracting) NEW DES Directions & Amendment to the SFE

New DES Directions and an amendment to the GMS Statement of Financial Entitlements (SFE) have now been published. These incorporate the new Directed Enhanced Services which were agreed as part of the revisions to the GMS contract for 2006/07.

– see <http://tinyurl.com/g757m>

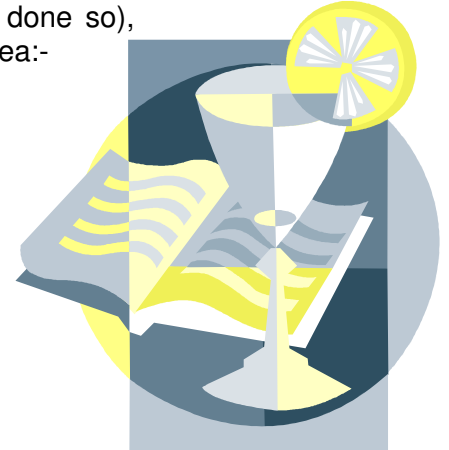
Primary Medical Services (Directed Enhanced Services) (England) Directions 2006

These Directions come into force 1st July 2006 and require that each primary care trust must exercise its functions under section 16CC of the National Health Service Act 1977 of providing primary medical services within its area, or securing their provision within its area, by (as part of its discharge of those functions) establishing (if it has not already done so), operating and, as appropriate, revising schemes as laid out in these Directions.

Each Primary Care Trust must exercise its functions under Section 16CC of the Act of providing primary medical services within its area, or securing their provision within its area (as part of the discharge of those functions), by establishing (if it has not already done so), operating and, as appropriate revising the following schemes for its area:-

- a Towards Practice Based Commissioning Scheme;
- an Improved Access Scheme;
- an Information Management and Technology Scheme;
- a Choice and Booking Scheme;
- a Childhood Immunisation Scheme;
- an Influenza and Pneumococcal Immunisation Scheme;
- a Violent Patients Scheme;
- a Minor Surgery Scheme.

see <http://tinyurl.com/nyh88>



Statement of Financial Entitlements (Amendment No.3) Directions 2006

The Statement of Financial Entitlements (Amendment) (No.3) Directions 2006 make changes to the Statement of Financial Entitlement (SFE) 2005 published on 30 March 2005, with effect from 1 July 2006. The SFE relates to the payments to be made by Primary Care Trusts to a contractor under a General Medical Services contract.

This amendment introduces four new sections to the SFE reflecting the four new Directed Enhanced Services introduced for 2006/07 following agreement by NHS Employers (NHSE) and the GPC. The new sections are:-

- 7A Towards Practice Based Commissioning;
- 7B Improved Access Scheme;
- 7C Information Management and Technology Scheme;
- 7D Choice and Booking Scheme.

see <http://tinyurl.com/njpyl>

Update of LMC Secretariat Database

Thank you to everyone who has sent in details of their practice. However, there are still some outstanding so please could you get the information to me as soon as possible. If you have mislaid the form you can download it from the website – www.devonlmc.org under the heading “Main Page & Current Items”

The form can then either be faxed, emailed or posted to
Lynn Stubbings: lynn@devonlmc.org

Many thanks for your help with this matter.

